



LOW SEASON

01.03.-28.04.

Fiskepiren > Preikestolen parking		Preikestolen parking > Fiskepiren	
Departure	Arrival	Departure	Arrival
WEEKDAYS, MONDAY-FRIDAY			
09:00	10:15	10:30	11:55
14:15	15:30	15:45	17:10
SATURDAY-SUNDAY			
09:00	10:15	10:20	11:55
14:15	15:30	15:45	17:10

AUTUMN/WINTER

21.10.-30.11.

Fiskepiren > Preikestolen parking		Preikestolen parking > Fiskepiren	
Departure	Arrival	Departure	Arrival
WEEKDAYS, MONDAY-FRIDAY			
08:15	09:30	15:50	17:10
SATURDAY			
09:00	10:15	16:20	17:40
SUNDAY			
09:00	10:15	16:20	17:40

Pulpit Rock Tours

TIMETABLE
2019

Order your
tickets today

at pulpitrock.no



BEST VALUE

We also offer
guided tours
every day



SPRING/AUTUMN

29.04.-31.05. and 16.09.-20.10.

Fiskepiren > Preikestolen parking		Preikestolen parking > Fiskepiren	
Departure	Arrival	Departure	Arrival
WEEKDAYS, MONDAY-FRIDAY			
08:15	09:30	09:45	11:10
09:00	10:15	10:30	11:55
14:15	15:30	15:45	17:10
		17:35	18:55
SATURDAY-SUNDAY			
07:30	08:45	08:50	10:25
09:00	10:15	10:20	11:55
14:15	15:30	14:15	15:40
		15:45	17:10

PRICES

Book at pulpitrock.no for our best prices. Ferry ticket is bought separately onboard the ferry. You can also pay with Vipps. Open the Vipps-app, click the «pay» button and search for «Pulpit Rock Tours Preikestolen».



Buy combined Airport Express Bus Ticket + Pulpit Rock Bus Ticket and get a discount! Read more at pulpitrock.no

GUIDED TOURS

Try a different path to Preikestolen, with a snack and stories along the way - book our local guide! Or why not try our Sunset-Sunrise overnight tour with guide.

Our guide does guided tours several times a week with his guests to the mountain plateau 604 meters above waterlevel, to a fantastic view of Lysefjorden and a feeling of freedom and excitement.

See pulpitrock.no for information, prices and booking.

WE ALSO RECOMMEND

Preikestolen cruise and hike: Experience Pulpit Rock from the fjord, and the fjord from Pulpit Rock, all in the same experience! Read more at rodne.no

WHAT DOES IT MEAN?

Departure	Arrival	Departure	Arrival
Departure with FERRY and arrival at destination with BUS.		Departure with BUS and arrival at destination with FERRY.	

! Weekends in May have the same departures as weekends in summerseason.



SUMMER 01.06.-15.09.

Book your trips and guided tours at pulpitrock.no

E-mail: pulpitrock@boreal.no
Tel.: 51 59 90 60

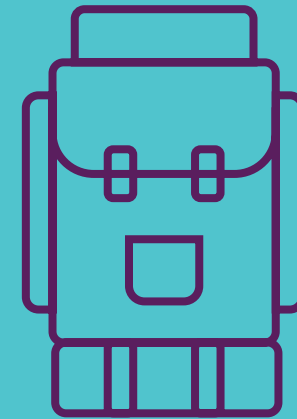
  @pulpitrocktours

Fiskepiren > Preikestolen parking		Preikestolen parking > Fiskepiren	
Departure	Arrival	Departure	Arrival
WEEKDAYS, MONDAY-FRIDAY			
07:45	09:00	09:05	10:25
08:15	09:30	09:45	11:10
09:00	10:15	10:30	11:55
09:45	11:00	11:15	12:40
10:30	11:45	13:30	14:55
11:15	12:30	14:15	15:40
12:45	14:00	15:00	16:25
13:30	14:45	15:45	17:10
14:15	15:30	16:30	17:55
15:00	16:15	17:35	18:55
17:30	18:45	20:20	21:40
SATURDAY			
07:30	08:45	08:50	10:25
08:15	09:30	09:45	11:10
09:00	10:15	10:20	11:55
09:45	11:00	11:15	12:40
10:30	11:45	14:15	15:40
11:15	12:30	15:00	16:25
14:15	15:30	15:45	17:10
15:00	16:15	16:30	17:55
15:45	17:00	17:15	18:40
18:00	19:15	18:05	19:25
		19:30	20:55

Fiskepiren > Preikestolen parking		Preikestolen parking > Fiskepiren	
Departure	Arrival	Departure	Arrival
SUNDAY			
07:30	08:45	08:50	10:25
09:00	10:15	10:20	11:55
09:45	11:00	11:15	12:40
10:30	11:45	14:15	15:40
11:15	12:30	15:00	16:25
14:15	15:30	15:45	17:10
15:00	16:15	16:30	17:55
15:45	17:00	17:15	18:40
17:15	18:30	18:50	20:10
		20:20	21:40

PREPARE PROPERLY



The tour requires good shoes and clothing. Bring your own food and drink. You can also have a fantastic dinner at Preikestolen Mountain Lodge. Estimated hiking time from Preikestolen parking and back: 3-5 hours.



✓ CHECKLIST

- Good shoes
- Good clothing
- Food
- Drinks
- Good attitude!

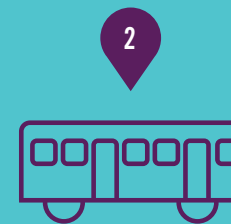
WHAT DOES IT MEAN?

 Departure	 Arrival	 Departure	 Arrival
Departure with FERRY and arrival at destination with BUS.		Departure with BUS and arrival at destination with FERRY.	

THE TRIP IN 1-2-3



Take the ferry from Fiskepiren. The buses correspond with the ferry departures both ways.



Board the Pulpit Rock Tours bus at Tau quay. The bus drives up to Preikestolen parking / Preikestolen Mountain Lodge.



Start your hike to Preikestolen!