

LOW SEASON

01.03.-28.04.

Fiskepiren > Preikestolen parking		Preikestolen parking > Fiskepiren	
			
Departure	Arrival	Departure	Arrival
WEEKDAYS, MONDAY-FRIDAY			
09:00	10:15	10:30	11:55
14:15	15:30	15:45	17:10
SATURDAY-SUNDAY			
09:00	10:15	10:20	11:55
14:15	15:30	15:45	17:10

SPRING/AUTUMN

29.04.-31.05. and 16.09.-20.10.

Fiskepiren > Preikestolen parking		Preikestolen parking > Fiskepiren	
			
Departure	Arrival	Departure	Arrival
WEEKDAYS, MONDAY-FRIDAY			
08:15	09:30	09:45	11:10
09:00	10:15	10:30	11:55
14:15	15:30	15:45	17:10
		17:35	18:55
SATURDAY-SUNDAY			
07:30	08:45	08:50	10:25
09:00	10:15	10:20	11:55
14:15	15:30	14:15	15:40
		15:45	17:10

			
Departure	Arrival	Departure	Arrival
Departure with FERRY and arrival at destination with BUS.		Departure with BUS and arrival at destination with FERRY.	

AUTUMN/WINTER

21.10.-30.11.

Fiskepiren > Preikestolen parking		Preikestolen parking > Fiskepiren	
			
Departure	Arrival	Departure	Arrival
WEEKDAYS, MONDAY-FRIDAY			
08:15	09:30	15:50	17:10
SATURDAY			
09:00	10:15	16:20	17:40
SUNDAY			
09:00	10:15	16:20	17:40

PRICES

Book at pulpitrock.no for our best prices. Ferry ticket is bought separately onboard the ferry. You can also pay with Vipps. Open the Vipps-app, click the «pay» button and search for «Pulpit Rock Tours Preikestolen».



Buy combined Airport Express Bus Ticket + Pulpit Rock Bus Ticket and get a discount! Read more at pulpitrock.no

GUIDED TOURS

Try a different path to Preikestolen, with a snack and stories along the way - book our local guide! Or why not try our Sunset-Sunrise overnight tour with guide.

Our guide does guided tours several times a week with his guests to the mountain plateau 604 meters above waterlevel, to a fantastic view of Lysefjorden and a feeling of freedom and excitement.

See pulpitrock.no for information, prices and booking.

WE ALSO RECOMMEND

Preikestolen cruise and hike: Experience Pulpit Rock from the fjord, and the fjord from Pulpit Rock, all in the same experience! Read more at rodne.no

Preikestolen, Lysefjorden



Pulpit Rock Tours

TIMETABLE 2019

Order your tickets today

at pulpitrock.no



We also offer guided tours every day



BEST VALUE




Weekends in May have the same departures as weekends in the summer season.







SUMMER 01.06.-15.09.





Book your trips and guided tours at pulpitrock.no

E-mail: pulpitrock@boreal.no
Tel.: 51 59 90 60

  @pulpitrocktours

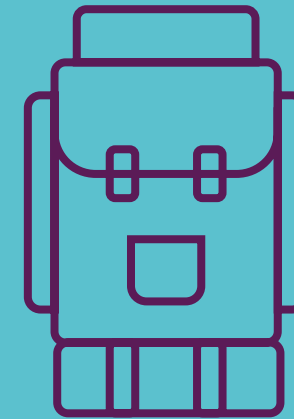
Fiskepiren > Preikestolen parking		Preikestolen parking > Fiskepiren	
			
Departure	Arrival	Departure	Arrival
WEEKDAYS, MONDAY-FRIDAY			
07:45	09:00	09:05	10:25
08:15	09:30	09:45	11:10
09:00	10:15	10:30	11:55
09:45	11:00	11:15	12:40
10:30	11:45	13:30	14:55
11:15	12:30	14:15	15:40
12:45	14:00	15:00	16:25
13:30	14:45	15:45	17:10
14:15	15:30	16:30	17:55
15:00	16:15	17:35	18:55
17:30	18:45	18:50	20:10
		20:20	21:40
SATURDAY			
07:30	08:45	08:50	10:25
08:15	09:30	09:45	11:10
09:00	10:15	10:20	11:55
09:45	11:00	11:15	12:40
10:30	11:45	14:15	15:40
11:15	12:30	15:00	16:25
14:15	15:30	15:45	17:10
15:00	16:15	16:30	17:55
15:45	17:00	17:15	18:40
18:00	19:15	18:05	19:25
		19:30	20:55

Fiskepiren > Preikestolen parking		Preikestolen parking > Fiskepiren	
			
Departure	Arrival	Departure	Arrival
SUNDAY			
07:30	08:45	08:50	10:25
09:00	10:15	10:20	11:55
09:45	11:00	11:15	12:40
10:30	11:45	14:15	15:40
11:15	12:30	15:00	16:25
14:15	15:30	15:45	17:10
15:00	16:15	16:30	17:55
15:45	17:00	17:15	18:40
17:15	18:30	18:50	20:10
		20:20	21:40

			
Departure	Arrival	Departure	Arrival
Departure with FERRY and arrival at destination with BUS.		Departure with BUS and arrival at destination with FERRY.	

PREPARE PROPERLY

The tour requires good shoes and clothing. Bring your own food and drink. You can also have a fantastic dinner at Preikestolen Mountain Lodge. Estimated hiking time from Preikestolen parking and back: 3-5 hours.



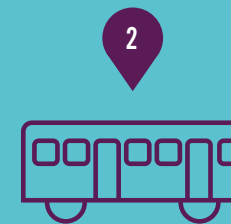
✓ CHECKLIST

- Good shoes
- Good clothing
- Food
- Drinks
- Good attitude!

THE TRIP IN 1-2-3



Take the ferry from Fiskepiren. The buses correspond with the ferry departures both ways.



Board the Pulpit Rock Tours bus at Tau quay. The bus drives up to Preikestolen parking / Preikestolen Mountain Lodge.



Start your hike to Preikestolen!